

# ARE YOUR TEENAGE CHILDREN ENGAGED IN LEARNING?



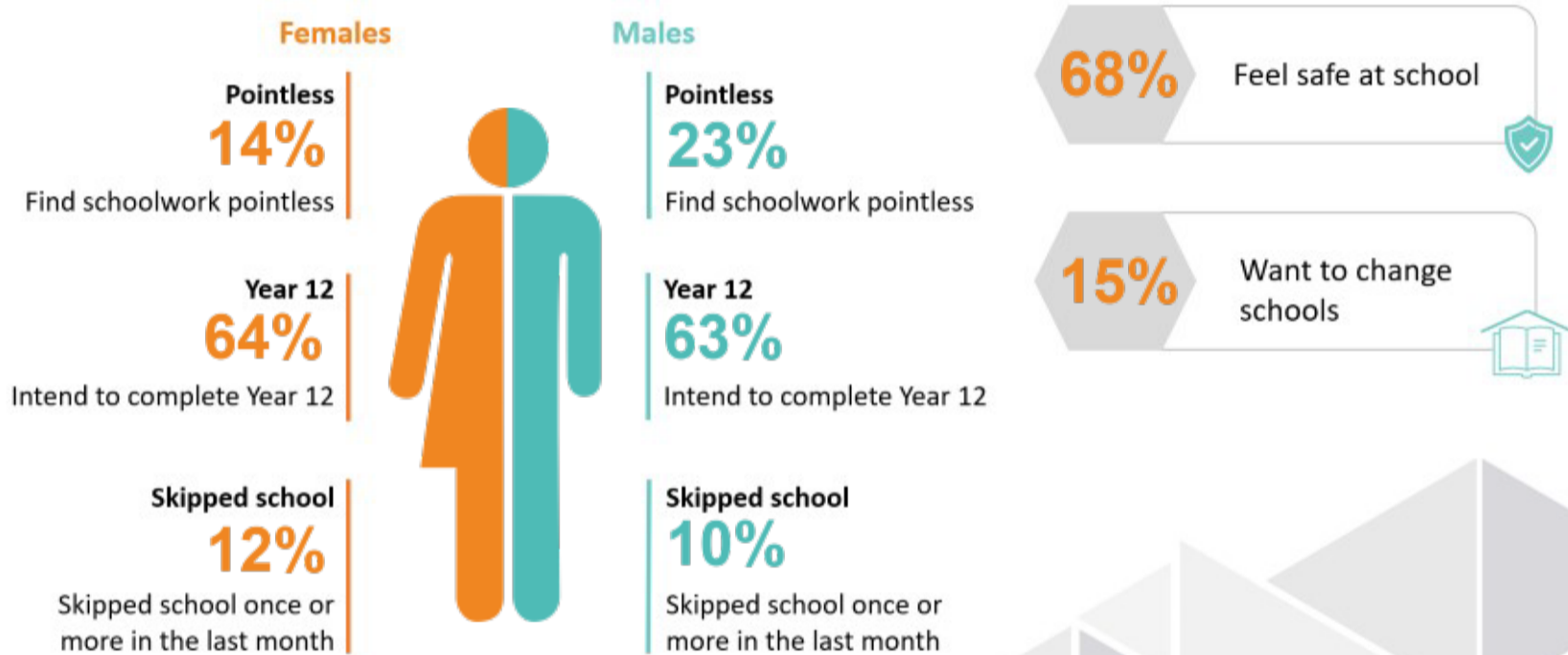
PARTNER Limestone Coast

What is Planet Youth? Planet Youth is a ground-breaking evidence based model, developed in Iceland, designed to reduce the risk factors and increase the protective factors associated with alcohol and drug use in our young people.

The Planet Youth team surveyed local Year 10 students, and this is what they think of their learning environment.

**FACT: 40% of year 10's say they are bored with school work.**

## School – Key Findings



### As a parent, what can you do?

#### Take action by:

- Getting to know your child's interests, their learning habits and supporting them.
- Encourage teenage children to engage with their learning and pursue activities which stimulate them to develop an attachment to key learnings.

For more information about Planet Youth in the Limestone Coast – [www.smlc.org.au](http://www.smlc.org.au)



Wellbeing SA

